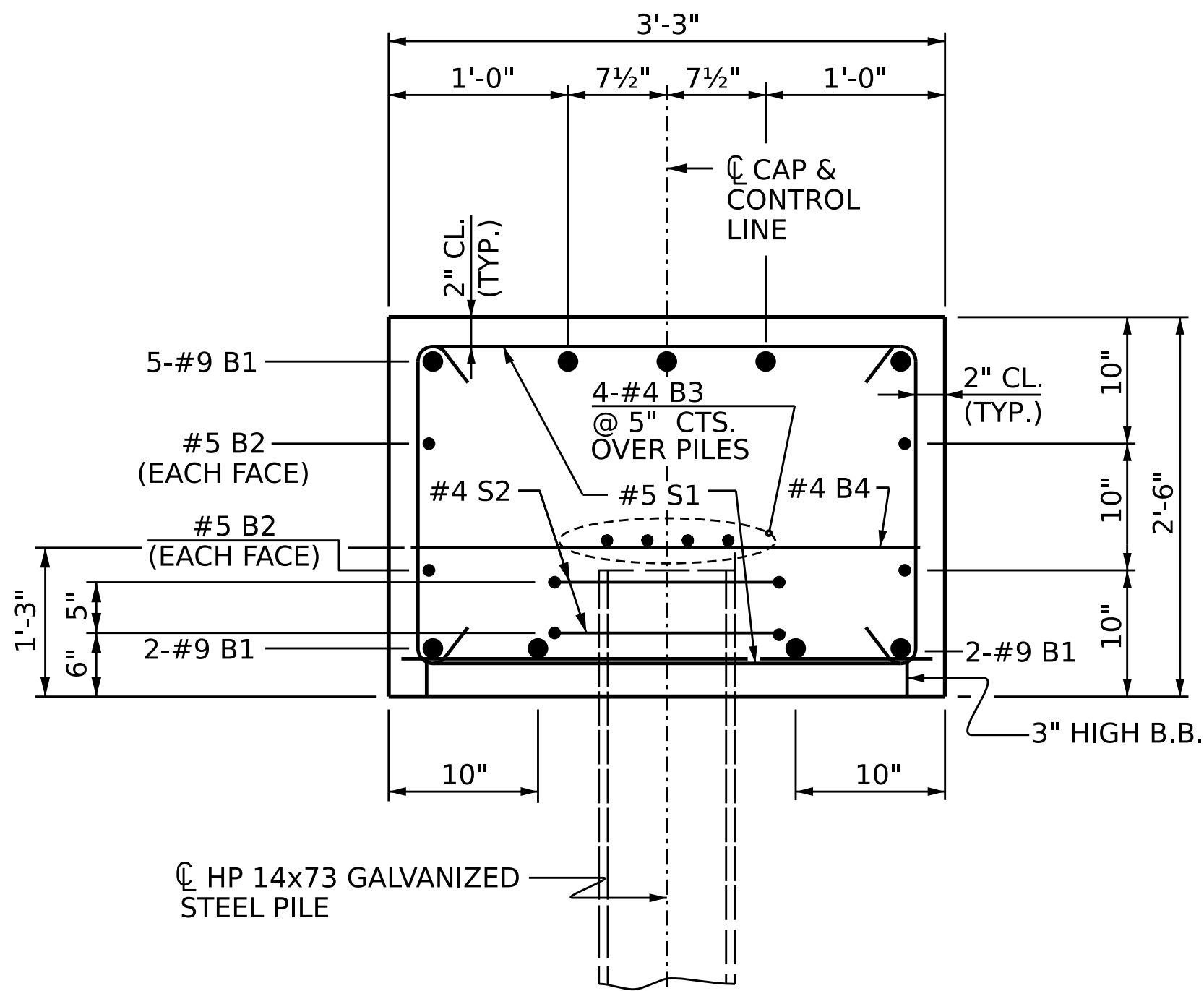
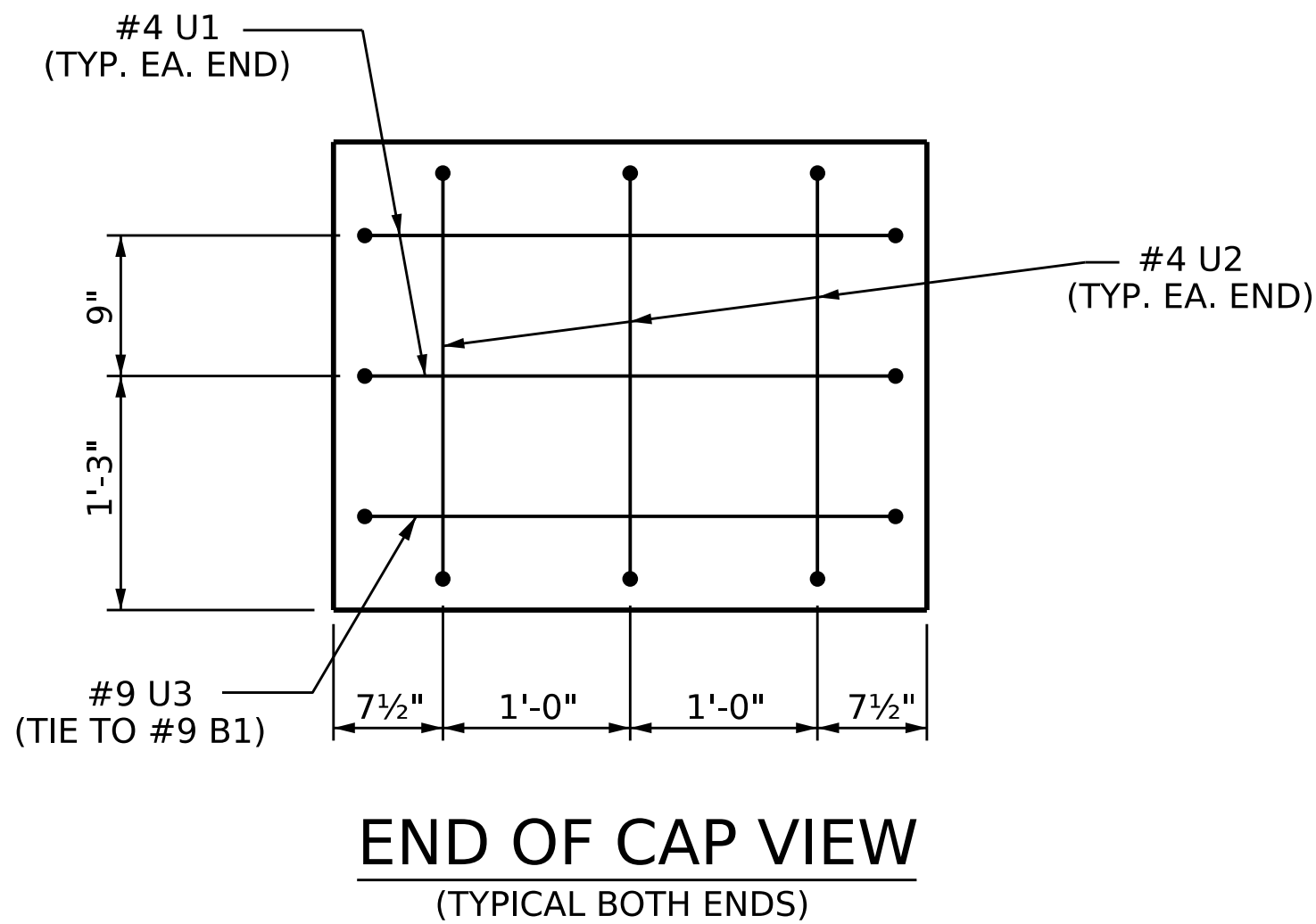
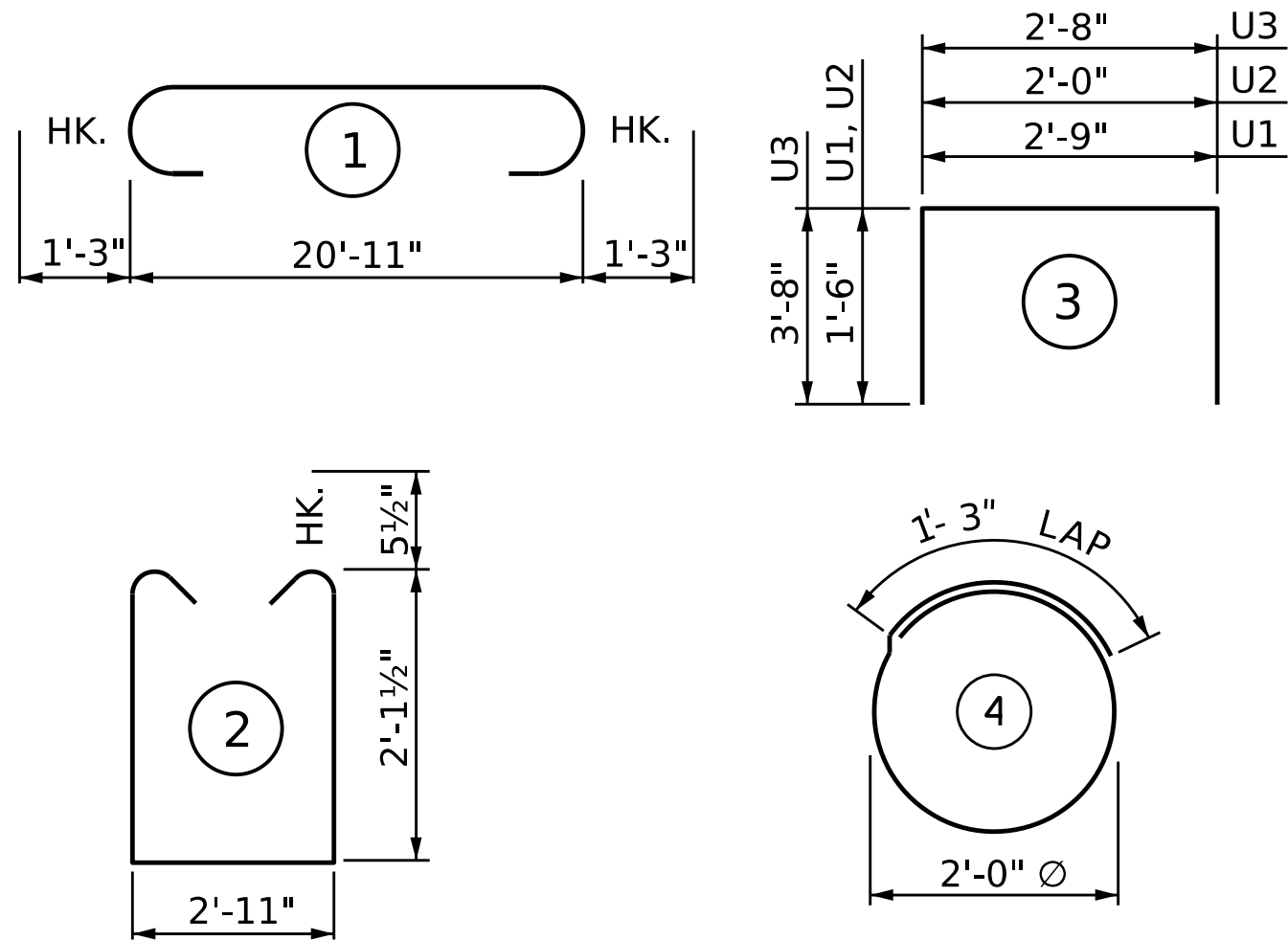


PILE SPLICE DETAILS



SECTION THRU CAP

BAR TYPES



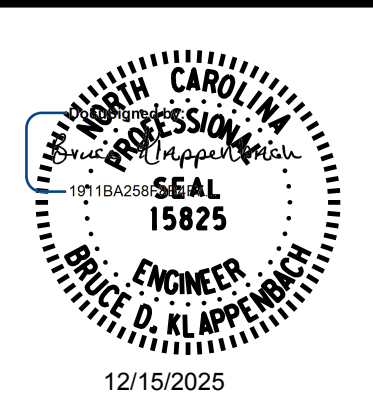
ALL BAR DIMENSIONS ARE OUT TO OUT

BILL OF MATERIAL

BENT 1					
BAR	NO.	SIZE	TYPE	LENGTH	WEIGHT
B1	9	#9	1	23'-5"	717
B2	4	#5	STR	21'-0"	88
B3	4	#4	STR	21'-0"	56
B4	6	#4	STR	2'-11"	12
S1	22	#5	2	8'-1"	185
S2	10	#4	4	7'-7"	51
U1	4	#4	3	5'-9"	15
U2	6	#4	3	5'-0"	20
U3	2	#9	3	10'-0"	68
REINFORCING STEEL					1,212 LBS.
CLASS A CONCRETE BREAKDOWN					
POUR #3 (CAP)					6.4 C.Y.
TOTAL CLASS A CONCRETE					6.4 C.Y.

DRAWN BY : B. H. GONFA DATE : JUL 2025
CHECKED BY : B. D. KLAPPENBACH DATE : JUL 2025
DESIGN ENGINEER OF RECORD: B. D. KLAPPENBACH DATE : JUL 2025

RK&K
P: (919) 878-9560
8601 Six Forks Road, Forum 1 Suite 700
Raleigh, North Carolina 27615 | NC License No. F-0112
Engineers | Construction Managers | Planners | Scientists
www.rkk.com
Responsive People | Creative Solutions



STATE OF NORTH CAROLINA DEPARTMENT OF TRANSPORTATION RALEIGH					
SUBSTRUCTURE BENT 1 DETAILS AND BILL OF MATERIAL					
REVISIONS					SHEET NO.
NO.	BY:	DATE:	NO.	BY:	DATE:
1			3		
2			4		
DOCUMENT NOT CONSIDERED FINAL UNLESS ALL SIGNATURES COMPLETED					S-17 TOTAL SHEETS 21